

HIGH VELOCITY DUAL-FUEL BURNER



WESMAN

COMBUSTION EQUIPMENT

SERIES 6435

HIGH VELOCITY

DUAL-FUEL _ Natural gas and/or light oil

WIDE STABILITY RANGE _ 15% excess fuel to 40% excess air

UNIT CONSTRUCTION _ The high temperature tile is secured in the main body section_ no extra support is required

USEFUL CAPACITY RANGES _ rating from 130000 to 1 600000 Btu/hr

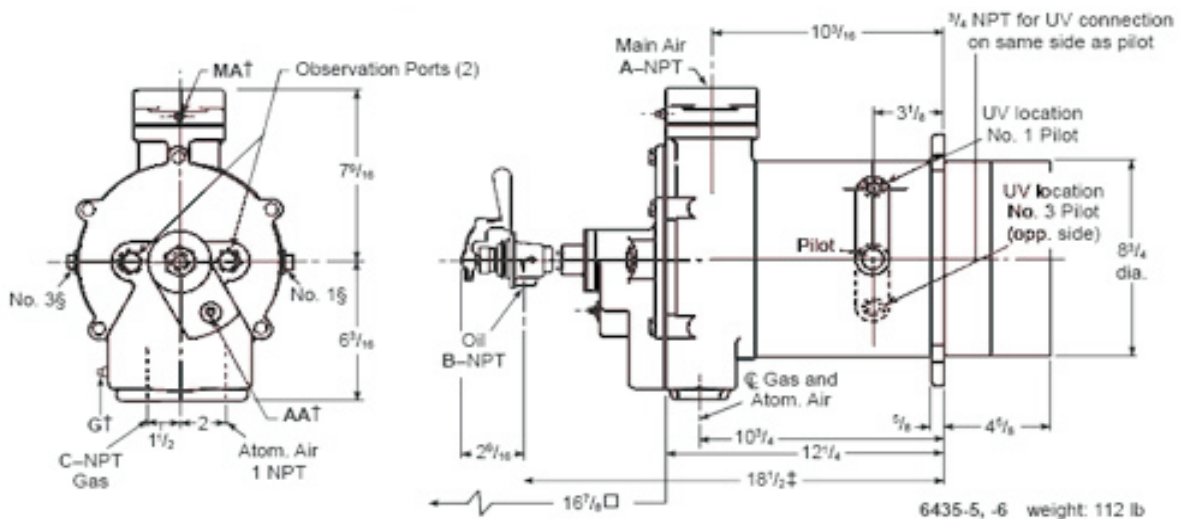
EASY INSPECTION SERVICE _ Air and gas piping need not be removed for complete access to internals.

PREHEATED AIR CAPABILITY _ 425°C main temperature



TABLE 1. MAIN AND ATOMIZING AIR CAPACITIES SCFH* (for Btu/hr, multiply by 100)

BURNER	FUEL	MAIN AIR					ATOMIZING AIR 16 OSI MAIN AIR		FLAME LENGTH 16 OSI MAIN AIR
		0.2	1	4	9	16	8 OSI	30 OSI	
6435-1	GAS	65	240	545	870	1220	75	180	9"
	OIL	85	232	545	865	1200			
6435-2	GAS	170	500	1090	1660	2280	30	140	8"
	OIL	165	430	1070	1660	2280			
6435-3	GAS	235	680	1530	2490	3420	70	180	12"
	OIL	300	665	1430	2320	3180			
6435-4	GAS	545	1270	2830	4350	6050	160	390	20"
	OIL	665	1240	2750	4310	5850			
6435-5	GAS	895	2060	4460	6950	9500	400	585	22"
	OIL	895	2110	4760	7450	10000			
6435-6	GAS	1000	3500	7100	11300	15200	380	470	38"
	OIL	1200	3600	7400	11200	15000			



BURNER	MAIN AIR AT 16 OSI	ATOMIZING AIR AT 16 OSI	
		8 OS	30 OSI
6435-1	1350	90	180
6435-2	3000	90	190
6435-3	4120	100	200
6435-4	7240	240	460
6435-5	12100	430 @ 16 osi	590
6435-6	17500	430 @ 16 osi	590

MAXIMUM % EXCESS AIR (16 OSI MAIN AIR)

FUEL	-1	-2	-3	-4	-5	-6
NATURAL GAS	400	400	400	350	350	600
# 2 OIL	200	300	400	300	350	600

WESMAN THERMAL ENGINEERING PROCESSES PVT LTD
 WESMAN CENTER, 8 MAYFAIR ROAD, KOLKATA 700019, INDIA
 TEL: +91 (33) 40020300 FAX: +91 (33) 22816402
 EMAIL: combustion@wesman.com WEBSITE: www.wesman.com
 Information in this document is non-binding and subject to modification

REGIONAL SALES AND SERVICE OFFICES:
 ■ MUMBAI (22) 28509521 ■ NEW DELHI (11) 26431723
 ■ CHENNAI (44) 28263581 ■ BANGALORE (80) 22225760
 ■ PUNE (20) 46703004 ■ AHMEDABAD (79) 30027355
 ■ HYDERABAD (40) 66312686 ■ NAGPUR (712) 6464349